



RAILWAY TERMINAL PROJECT

Janeiro de 2012

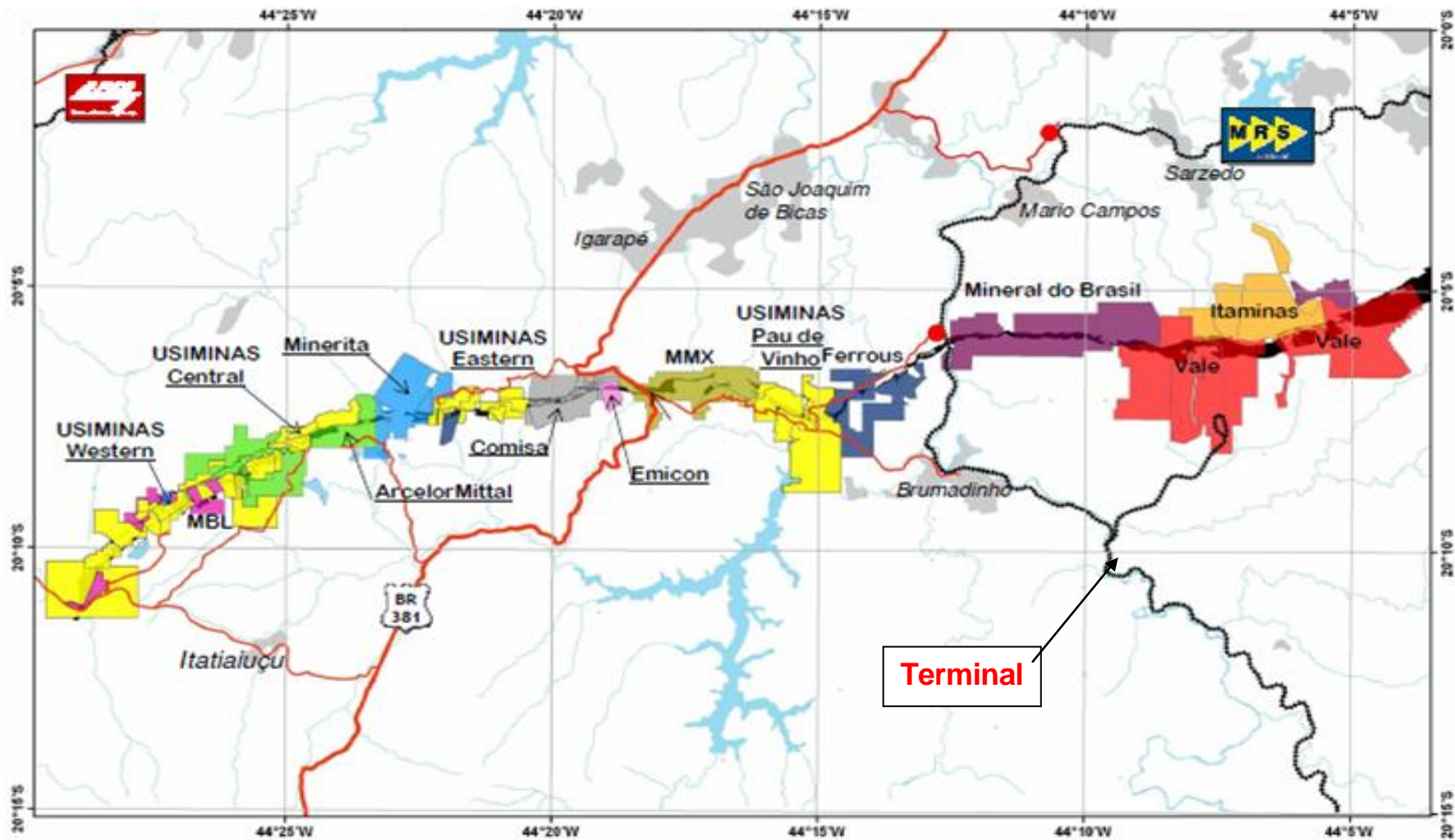
The terminal will enable the operations of loading and reception of bulk and general cargoes such as iron ore, pig iron and also operations with containers for steel products, among others.

This project offers the following advantages compared to other terminals in the region:

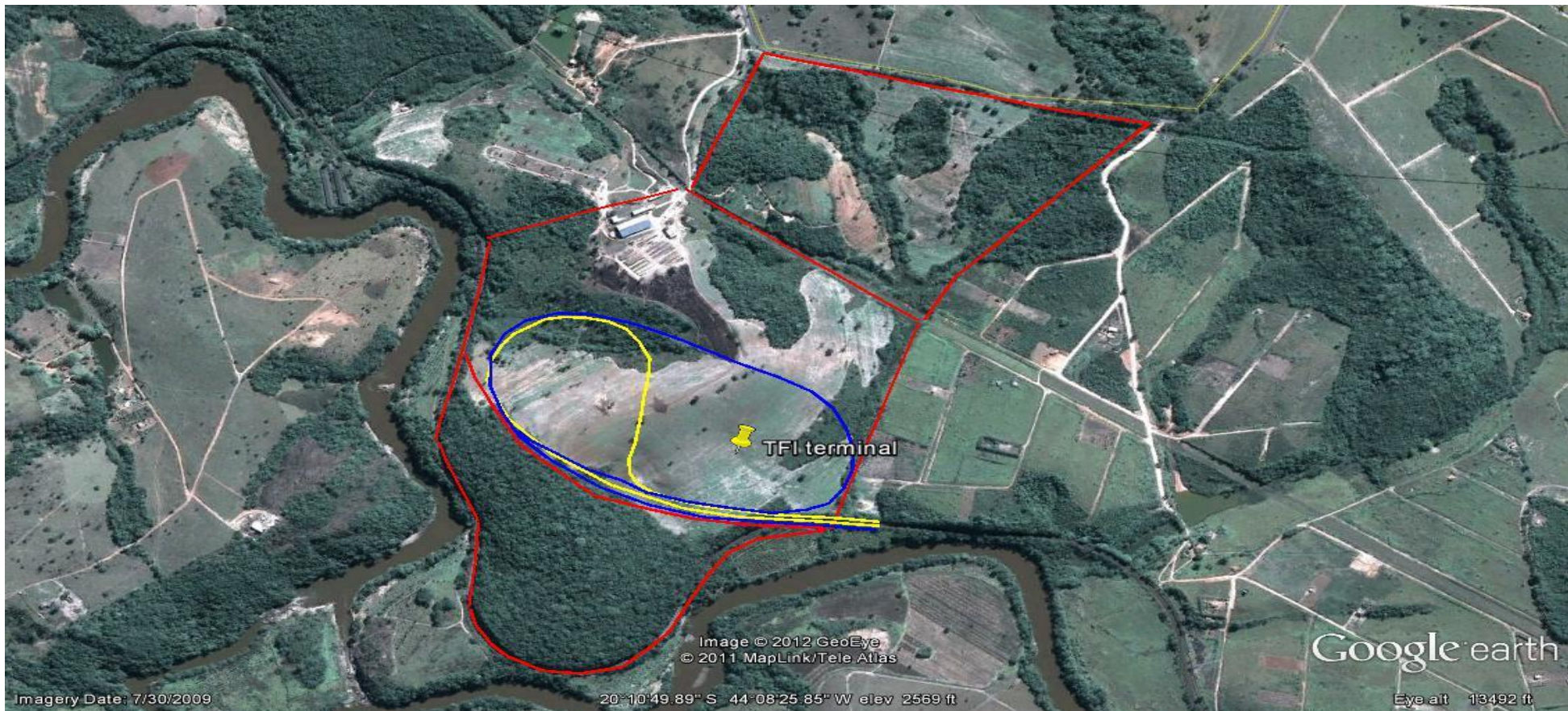
- The other options are not able to expand;
- The Project is geographically located in the center of one of the main iron ore producing pole in the State of Minas Gerais;
- giving to the terminal the status of one of the main options of distribution and an entrance and exit door to the foreign market;

The terminal has three main basic requirements which give it the characteristic of an operational terminal:

- Logistic advantages since it is located close to the railway and paved state highway;
 - 100 hectares of land enough to accommodate all operations;
 - Possibility of quick and fast operations with possibility to reach up to 40 million tons per year of bulk cargoes;
-
- Location in the center of 2 production poles of iron ore giving it a condition of supporting terminal to the export activities;
-

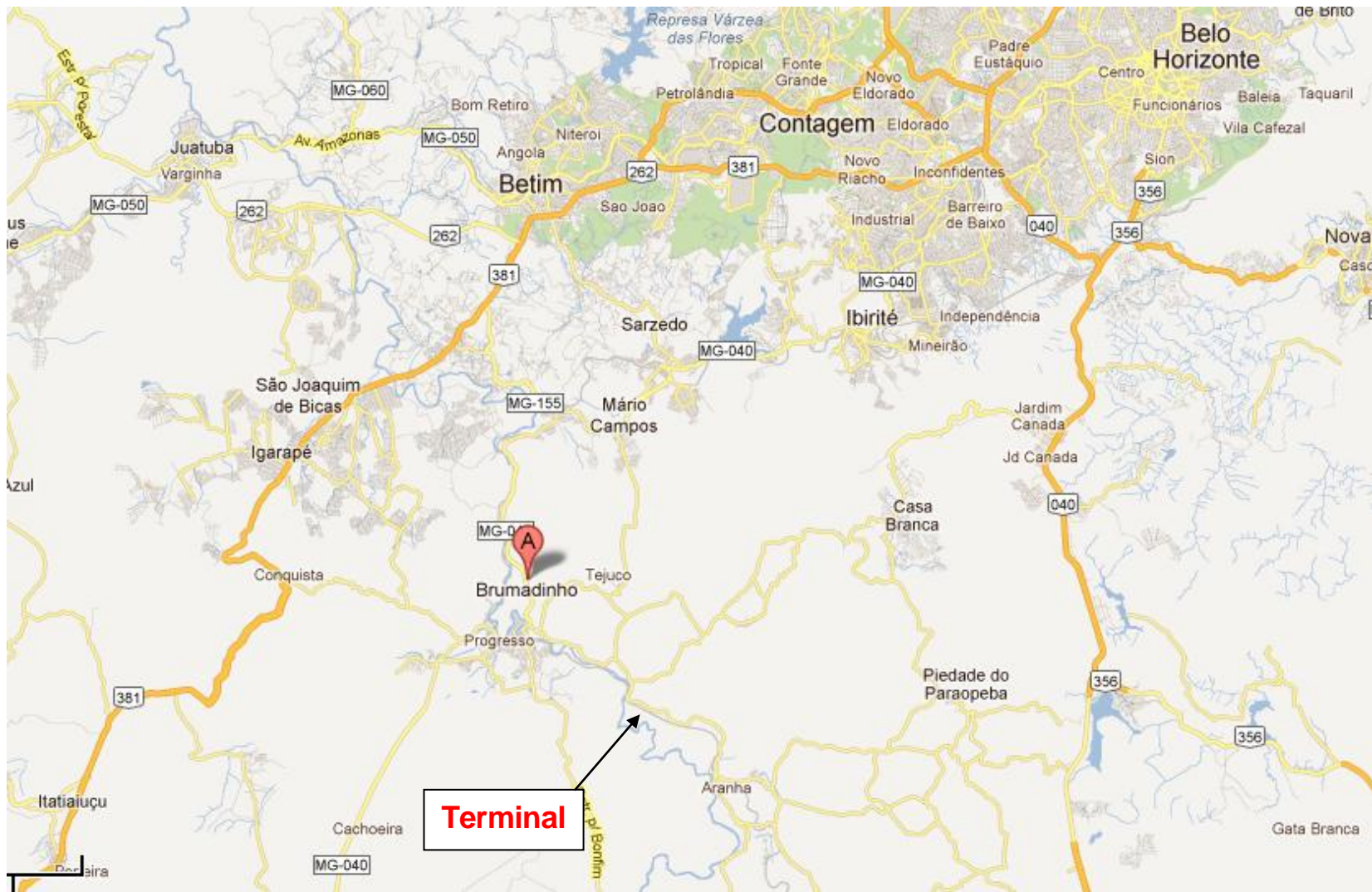


- The terminal area is located along the railway and in the range where the railway makes a big curve then following the Paraopeba river. The strategic location of the terminal will allow a substantial reduction of investment in super structure thus eliminating a complicated operational problem to MRS.



Location





Terminal



Multicommerce - Comércio Importação e Exportação Ltda.
Rua Tomé de Souza, Nr. 860 - Conj. 1.207/1.208 - Funcionários
Belo Horizonte / MG - CEP - 30.140-909 -Tel/Fax (31) 3262-0110
email: multicommerce@multicommerce.com.br
web site: www.multicommerce.com.br
